

Ormskirk Paediatric Emergency Department Monthly Bulletin: July 2011 to June 2012

This bulletin provides a breakdown of all injury attendances at Ormskirk Paediatric Emergency Department (ED) between July 2011 and June 2012.¹

Between July 2011 and June 2012 there were 5,644 ED attendances. Injury attendances peaked in May (n=623), with December (n=249) having the least number of injury attendances (**Figure 1**).

Figure 2 illustrates injury attendances by gender. For all months there were more male (60%) injury attendances than female presenting at Ormskirk Paediatric ED.

Figure 3 presents the age group of injury attendances. Across the whole year almost two-fifths (39%) of injury attendances were made by people aged between 10 and 14 years.

Table 1 details the injury group of injury attendances. The majority of injury attendances

were classified as other injury (72%). Just over one-fifth (21%) were recorded as sports injury and 4% road traffic collisions (RTCs).

Table 2 illustrates the source of referral for patients presenting with injuries. The majority (93%) of injury attendees were recorded as other. **Table 3** presents injury attendances by location of incident. Nearly four in ten of all injury locations were recorded as in a public place (37%) or in the home (35%). **Table 4** shows the disposal method of injury attendances. Over seven in ten (72%) of attendees were discharged requiring no follow-up.

Assault attendees presenting at the Ormskirk ED between July 2011 and June 2012 were mainly male (73%) and the primary location of assault was in a public place (61%). The majority of ED assault attendances were aged 15 and 29 years (n=39; 51%) and 46% were aged between 5 and 14 (n=37; 48%).

Figure 1: Total number of injury attendances by month, July 2011 to June 2012

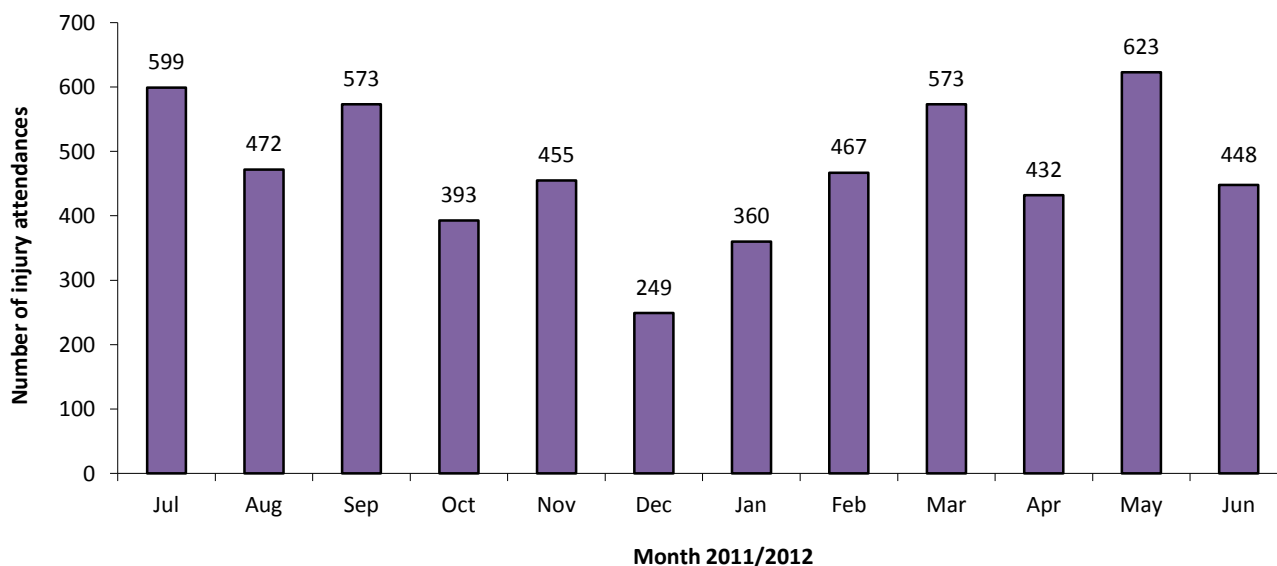


Figure 2: Gender of injury attendances by month, July 2011 to June 2012

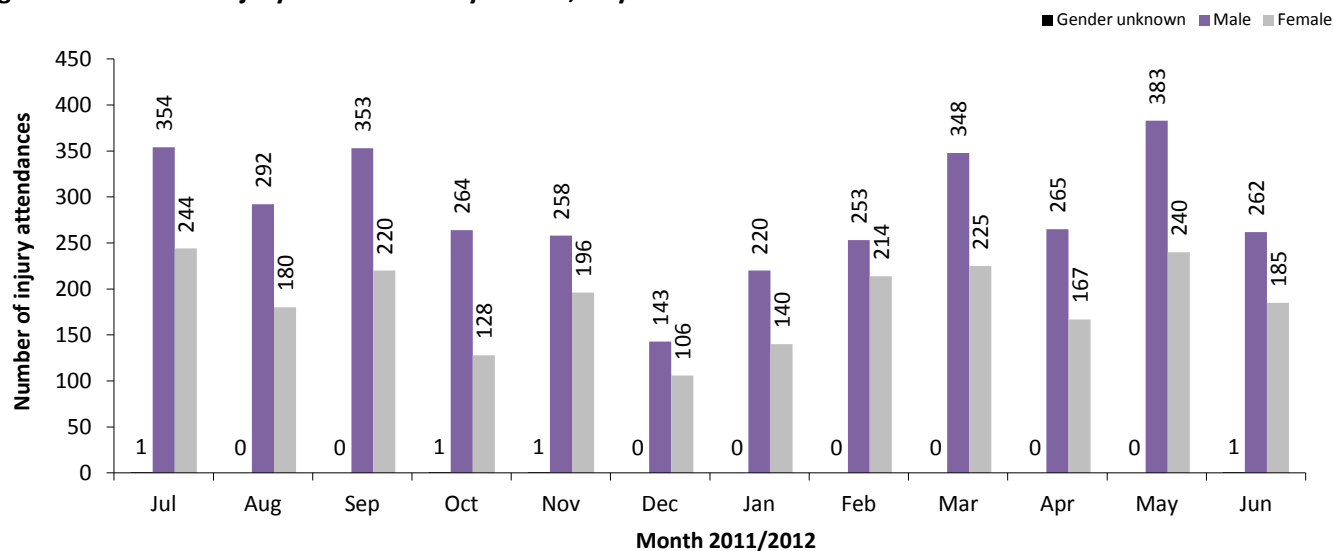


Figure 3: Age group of injury attendances by month, July 2011 to June 2012

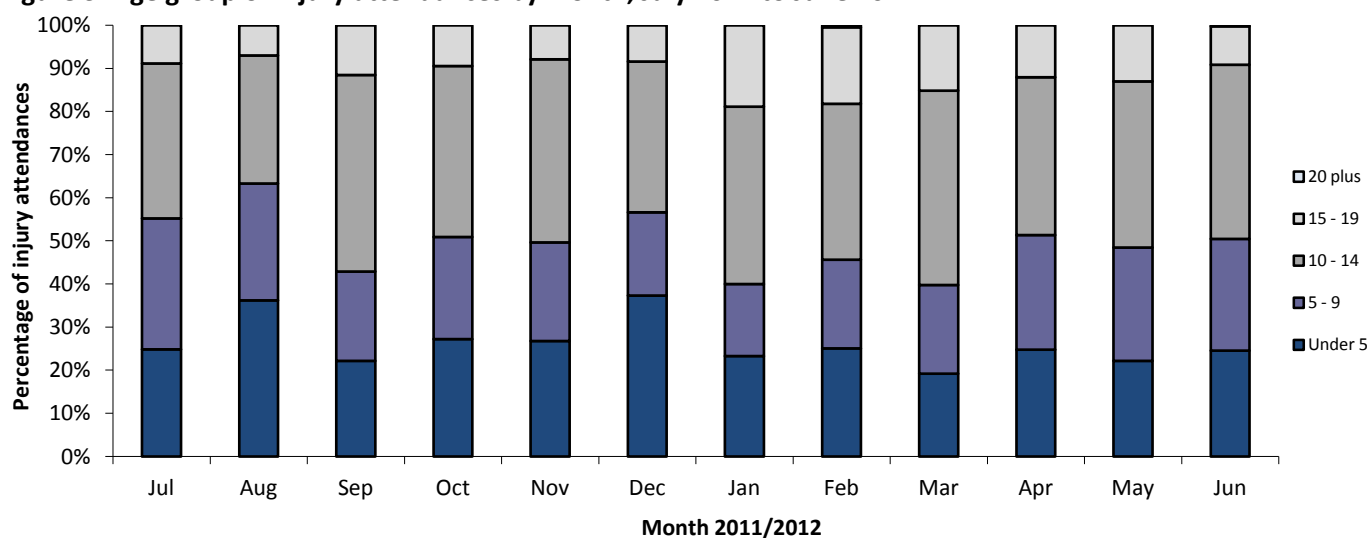


Table 1: Injury attendances by injury group and month, July 2011 to June 2012^{2,3}

Injury group	Jul	Aug	Sep	Oct	Nov	Dec	Jan	Feb	Mar	Apr	May	Jun	Total	%
Other injury	495	398	377	243	298	177	252	327	380	321	450	334	4052	72
Sports injury	73	40	166	106	115	32	78	99	163	78	143	87	1180	21
RTC	22	23	14	21	28	27	18	23	20	19	21	16	252	4
Deliberate self-harm	***	<9	9	<20	***	8	5	12	5	6	***	***	83	1
Assault	<9	***	7	***	<11	5	7	6	5	8	<8	<8	77	1
Total	599	472	573	393	455	249	360	467	573	432	623	448	5644	100

Table 2: Injury attendances by source of referral and month, July 2011 to June 2012⁴

Source of referral	Jul	Aug	Sep	Oct	Nov	Dec	Jan	Feb	Mar	Apr	May	Jun	Total	%
Other	562	432	527	349	417	226	334	430	540	402	579	427	5225	93
Health care provider: same or other	19	25	14	10	18	9	9	11	15	19	25	8	182	3
Self referral	***	10	10	19	8	5	***	12	6	***	***	6	84	1
Emergency services	6	***	9	***	***	***	***	***	9	***	5	***	53	1
Educational establishment	***	***	5	5	5	6	***	6	***	***	6	***	44	1
GP	6	***	7	***	***	***	6	***	***	***	5	***	40	1
Unknown	***	***	***	***	***	***	***	***	***	***	***	***	9	0
Police	***	***	***	***	***	***	***	***	***	***	***	***	<7	0
Local authority social services	***	***	***	***	***	***	***	***	***	***	***	***	***	0
Total	599	472	573	393	455	249	360	467	573	432	623	448	5644	100

Table 3: Injury attendances by location of incident and month, July 2011 to June 2012⁵

Location	Jul	Aug	Sep	Oct	Nov	Dec	Jan	Feb	Mar	Apr	May	Jun	Total	%
Public place	223	212	201	160	143	77	117	159	228	199	231	166	2116	37
Home	250	223	192	120	143	110	115	160	144	156	202	159	1974	35
Educational establishment	92	***	152	93	154	<49	109	133	182	50	138	88	1243	22
Other	34	<34	28	20	15	<15	19	15	19	27	52	35	311	5
Total	599	472	573	393	455	249	360	467	573	432	623	448	5644	100

Table 4: Disposal method of all injury attendances by month, July 2011 to June 2012

Disposal method	Jul	Aug	Sep	Oct	Nov	Dec	Jan	Feb	Mar	Apr	May	Jun	Total	%
Discharged - no follow-up	440	329	381	286	337	179	272	356	389	297	443	345	4054	72
Referred to fracture clinic	80	55	80	47	45	21	43	60	87	69	89	53	729	13
Referred to other health care professional	30	30	37	21	32	19	20	22	30	13	33	17	304	5
Admitted to hospital bed	22	21	23	11	19	16	10	12	17	15	20	11	197	3
Transferred to other health care provider	9	21	11	6	7	6	7	***	11	9	13	<6	108	2
Discharged – follow-up by other health care provider	5	5	***	10	***	***	***	7	14	13	10	7	82	1
Referred to other out-patient clinic	9	8	***	10	10	***	***	***	5	8	***	***	67	1
Referred to ED clinic	***	***	34	***	***	***	***	***	***	***	***	***	7	53
Left A&E before being treated	***	***	***	***	***	***	***	***	14	6	8	***	42	1
Left A&E - refused treatment	***	***	***	***	***	***	***	***	***	***	***	***	***	0
Other	***	***	***	***	***	***	***	***	***	***	***	***	***	0
Total	599	472	573	393	455	249	360	467	573	432	623	448	5644	100

Published August 2012

Johnathan Rooney (TIIG officer), Val Upton (Senior Public Health Researcher / Analyst)
 Centre for Public Health, Faculty of Health and Applied Social Sciences, Liverpool John Moores University
 2nd Floor, Henry Cotton Campus, Liverpool, L3 2ET

Tel: 0151 231 4539 Email: j.rooney@ljmu.ac.uk

Website: www.tiig.info (please note all data requests should be made through the TIIG website)

¹ Previous reports include data from the Minor Injury Unit. These data are no longer housed by Ormskirk's information team but by the PCT and therefore cannot be included in this report.

² *** Please note that all numbers less than five have been suppressed in line with patient confidentiality and if there is only one number in a category then two numbers will be suppressed at the next level (e.g. <6) in order to prevent back calculations from totals.

³ Due to low numbers firework injuries have been included under 'Other injury.'

⁴ GP=general practitioner.

⁵ Due to low numbers injuries sustained at work have been included under 'Other' location.